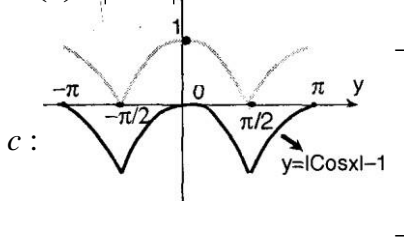


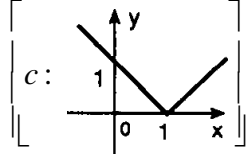
38) $f : [-\pi, \pi] \rightarrow \mathbb{R}, f(x) = |\cos x| - 1$

fonksiyonunun

grafliğini çiziniz.

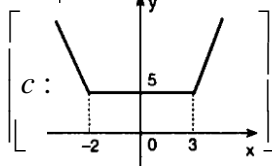


39) $2y = |x-1| + |1-x|$ fonksiyonunun grafiği?

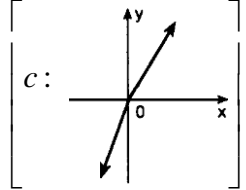


40) $f : \mathbb{R} \rightarrow \mathbb{R}, f(x) = |x+2| + |x-3|$ fonksiyonunun

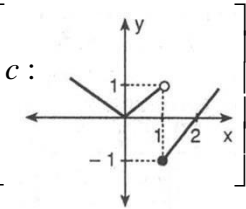
grafliğini?



41) $f(x) = |x| + 2x$ fonksiyonunun grafiği?

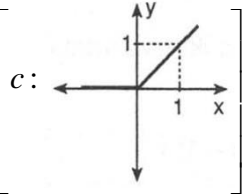


42) $f = \begin{cases} |x| & , x < 1 \\ x-2 & , x \geq 1 \end{cases}$ grafiği?

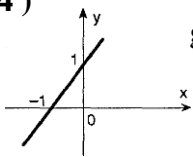


43) $f : \mathbb{R} \rightarrow \mathbb{R}, 2.f(x) = |x| + x$ fonksiyonunun gra-

fiği ?

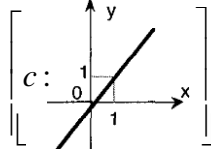


44) şekilde $y = f(x)$ fonksiyonunun grafiği verilmiştir. Buna göre

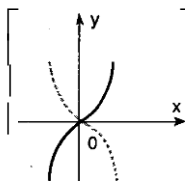


$y = f(x-1)$ fonk.nun grafiğini

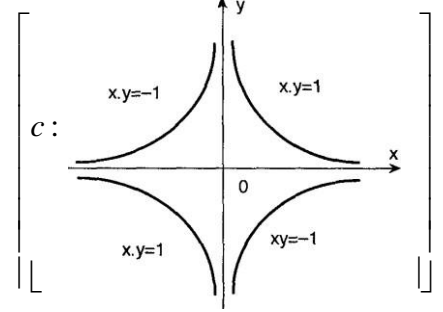
çiziniz.



45) $f(x) = x|x|$ fonk. grafiğini çiziniz.

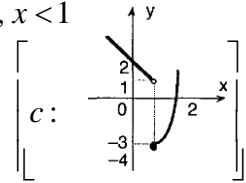


46) $|x.y| = 1$ bağıntısının grafiğini çiziniz.



47) $f : \mathbb{R} \rightarrow \mathbb{R}, f(x) = \begin{cases} x^2 - 4 & , x \geq 1 \\ -x + 2 & , x < 1 \end{cases}$ fonk. nun

grafliğini çiziniz.



48) $f : \mathbb{R} \rightarrow \mathbb{R}, f(x) = |x+1| + 4$ fonksiyonunun

görüntü kümesi nedir?

$[c: [4, \infty))$

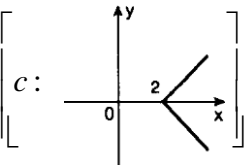
49) $f(x) = |x+1| - 1$ fonksiyonunun görüntü kümesi-

nin en küçük elemanı ile $g(x) = 1 - |x+1|$ fonksiyonunun görüntü kümesinin en büyük elemanının toplamı kaçtır?

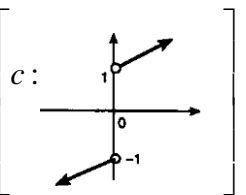
$[c: 0]$

50) $\beta = \{(x, y) : x, y \in \mathbb{R}, |y| = x - 2\}$ bağıntısının

grafliğini?



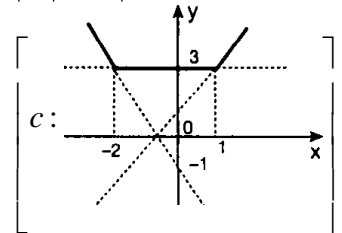
51) $y = x + \frac{x}{|x|}$ fonk grafiği.



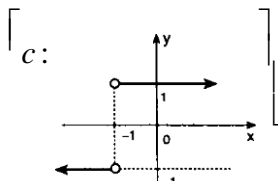
52) $f : \mathbb{R} \rightarrow \mathbb{R}, f(x) = |x-1| + |x+2|$

fonksiyonunun

grafliğini?

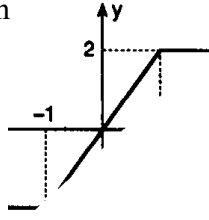


53) $f : \mathbb{R} - \{-1\} \rightarrow \mathbb{R}, f(x) = \frac{|x+1|}{x+1}$ fonksiyonunun



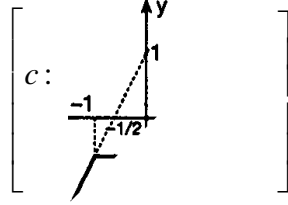
grafīgi?

54) Yandaki şekilde grafiği verilen f fonksiyonu hangisidir? $[c : B]$

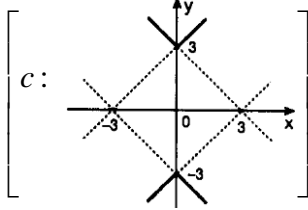


- A) $f(x) = |x+2| + |x-2|$
 B) $f(x) = |x+1| - |x-1|$
 C) $f(x) = |1+x| - |2-x|$
 D) $f(x) = |x+1| + |1-x|$ E) $f(x) = |x+1| + 2$

55) $f(x) = x - |1+x|$ fonksiyonunun grafiği?

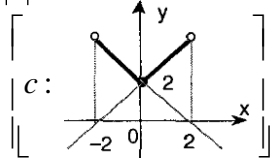


56) $|y| = |x| + 3$ bağıntısının grafiği?

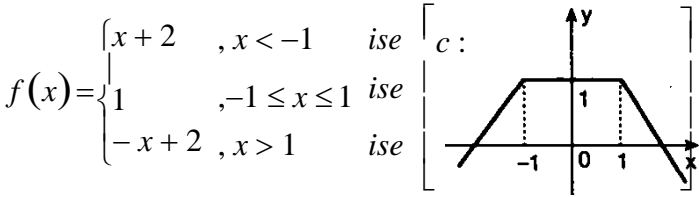


57) $f: -2,2 \rightarrow R, f(x) = \frac{x^2 - 4}{2 - |x|}$ fonksiyonunun

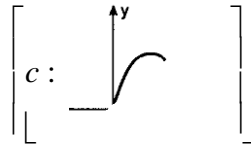
grafiğini çiziniz.



58) $f: R \rightarrow R$

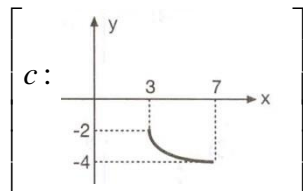


59) $f(x) = x|x-3|$ fonksiyonunun grafiği?

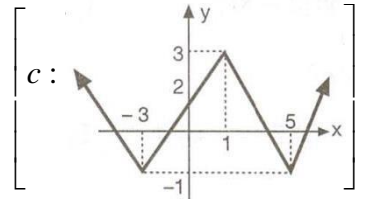


60) $f: [-4, -2] \rightarrow [3, 7]$ olmak üzere

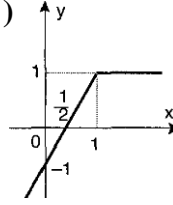
$f(x) = x^2 + 4x + 7$ fonksiyonu tanımlanıyor. Buna göre $f(x)^{-1}$ fonksiyonunun grafiğini çiziniz.



61) $f(x) = |x-2| - 1$ ve $g(x) = |x-1| - 2$ fonk. veriliyor. Buna göre $(f \circ g)(x)$ fonk. grafiğini çiz.

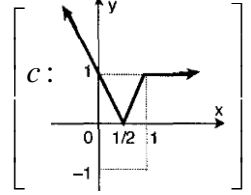


62) şekilde $y = f(x)$ fonksiyonunun grafiği verilmiştir. Buna göre

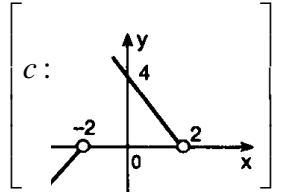


$|y| = f(x)$ bağıntısının

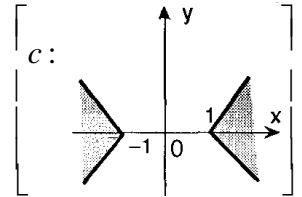
grafiğini çiziniz.



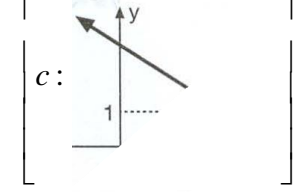
63) $|y| = \frac{4y}{|y|} - 2x$ ile tanımlı bağıntısının grafiği?



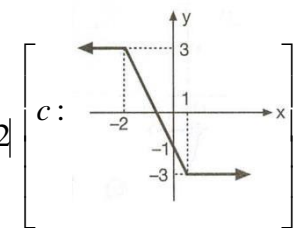
64) $|y| \leq |x| - 1$ bağıntısının grafiğini çiziniz.



65) $3y - x = 2|x - 3|$ fonk. nun grafiğini çiziniz.



66) $f(x) = \sqrt{x^2 - 2x + 1} - |x + 2|$



fonk. nun grafiğini çiziniz.

67) $x - 3 = |1 - y|$ bağıntısının grafiğini çiziniz.

